

SCHEDULE A

CITY OF NANAIMO PRELIMINARY LAYOUT ACCEPTANCE

2024-APR-04

Date

Approved By

2025-APR-04

Expiry Date

PROPOSED BARE
LAND STRATA
SUBDIVISION PLAN
(SLOPE ANALYSIS)

FIELDING HOMES LTD.

REM. OF LOT 5, BLOCK A,
SECTION 2, NANAIMO
DISTRICT, PLAN 2846

ADDRESS: 1247 FIELDING ROAD,
NANAIMO, B.C.

PROJECT SURVEYOR: D.W. HOLME

DRAWN BY: JOM/VDH DATE: SEPT. 1/22

OUR FILE #: 80303 REVISION:

JEA J. E. ANDERSON
SURVEYORS
ENGINEERS

1A - 3411 SUTTON ROAD, NANAIMO, B.C. V1T

2ND FLOOR

TEL: 250-758-4831 FAX: 250-758-4830

1000 J. CARROLL ROAD, NANAIMO, B.C. V1T

1ST FLOOR

NANAIMO - VICTORIA - PARKSVILLE - CAMPBELL RIVER

LEGEND SUB01486

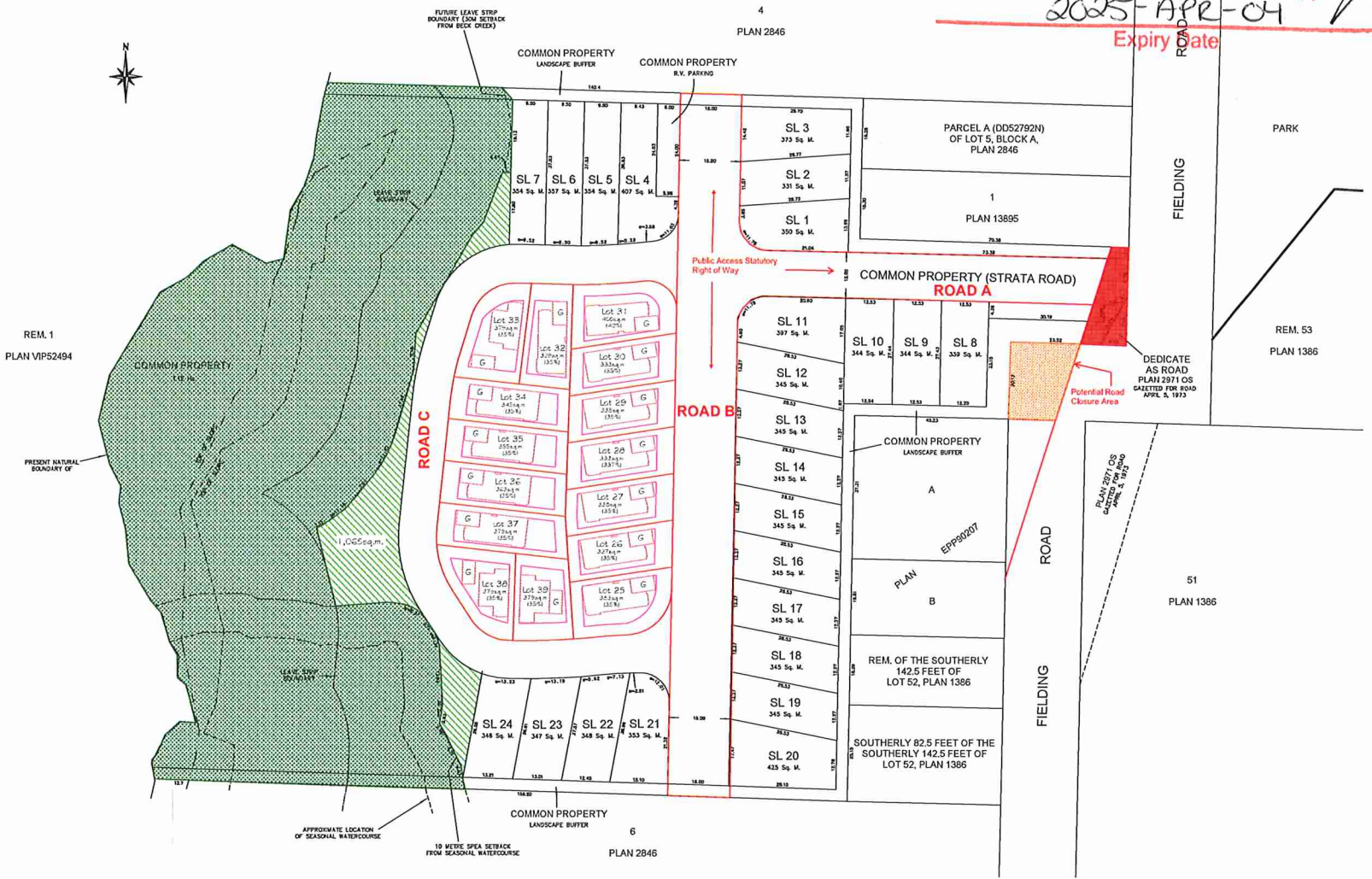
ALL DIMENSIONS ARE IN METRES

SUBJECT TO CHARGES SHOWN
ON TITLE NO. C4282102

(P.L.D. 500-364-833)

DIMENSIONS ARE DERIVED FROM
LAND TITLE OFFICE RECORDS

THIS PLAN HAS BEEN PREPARED IN
ACCORDANCE WITH THE PROFESSIONAL
REFERENCE MANUAL



0 5 10 20 30 40 50
The intended plot size of this plan is 884mm in width by 500mm in height (D size) when plotted at a scale of 1:300